

# C10 & GP10: Saftronics Dedicated Pump Controllers - Designed for Today's Demanding Applications



Saftronics Dedicated Pump Controllers have been designed to meet the specific demands and requirements of pumping applications.

## Saftronics Pump Application Software

### FEATURES

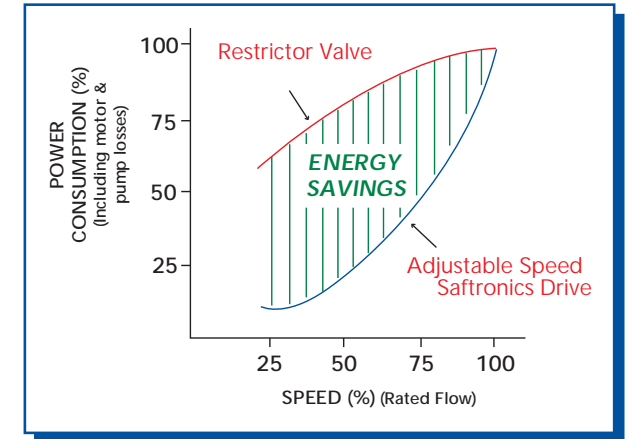
- ▶ No-Flow Detection Shut-Down
- ▶ Single Pressure Transducer Control
- ▶ Programmable Pressure Set-Point
- ▶ Programmable Pressure Start Level
- ▶ Multiple Programmable Automatic Restarts
- ▶ Auto Lead/Lag with Alternation
- ▶ Controlled Pressure Start
- ▶ DC Link Choke for Harmonic Reduction
- ▶ Hand/Automatic Mode from Keypad

### PUMP PROTECTION

- ▶ Water Seal Logic
- ▶ No Suction Pressure Detection
- ▶ High Pressure Shut-down
- ▶ Transducer Signal Loss
- ▶ Programmable Start Delay
- ▶ Pump Runtime Hours
- ▶ Over Torque Protection
- ▶ Low Flow Cycling Protection (Sleep Mode)
- ▶ Over-Pressure Sensing & Alarm
- ▶ Pump Fault and Alarm History
- ▶ Motor Protection
  - Phase Loss
  - Ground Fault
  - Short Circuit
  - Motor Overload

Saftronics Pump application software makes setting up a variable speed control system easier than ever. One device provides the capability for exacting process control, automatic pump protection, and continuous condition monitoring. The software eliminates the need for custom programming, or complex wiring schemes.

Our detailed programming manual builds upon our experience with pumping systems and guides you through installation and start-up, explaining where to find needed information and what it is used for.

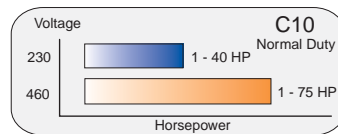
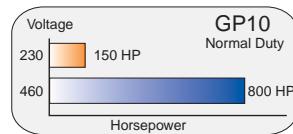


## BENEFITS OF VARIABLE FREQUENCY DRIVES (VFD) VS. RESTRICTOR VALVE (RV)

- ▶ VFD's operate pumps at maximum efficiency over entire flow range. A constant speed pump with restrictor valve becomes very inefficient at low flows.
- ▶ VFD systems have soft-start and soft-stop capabilities. Pressure surges and water hammer are eliminated. Mechanical damage to pump is significantly reduced.
- ▶ Peak power demands are eliminated.
- ▶ Motor temperature is greatly reduced. Winding insulation life is increased.
- ▶ Energy savings is maximized. You only pay for what you need. **Typical payback period can be less than 1 year!**



Drives for every industry



Note: Control Panels built to UL508A Standards.

## MULTIPLE PUMP NETWORKING

- ▶ Controls Multiple Pumps (up to 6 for GP10, up to 3 for C10)
- ▶ Built-in Lead-Lag Alternation
- ▶ No PLC Technology
- ▶ Optional HMI Interface for enhanced diagnostics and trouble shooting



We're just a phone call away United States and Canada (239) 693-7200

## C10 & GP10 Dedicated Pump Controllers

### SIMPLE

- ▶ Dedicated pump control in an easy to use single or multi drive package
- ▶ Easy operator display for programming in pump language

### RELIABLE & SAFE

- ▶ Reduced maintenance and down time

### FLEXIBLE

- ▶ Multi-pump control and sizes up to 800 Hp
- ▶ Multi pump connection via serial communication

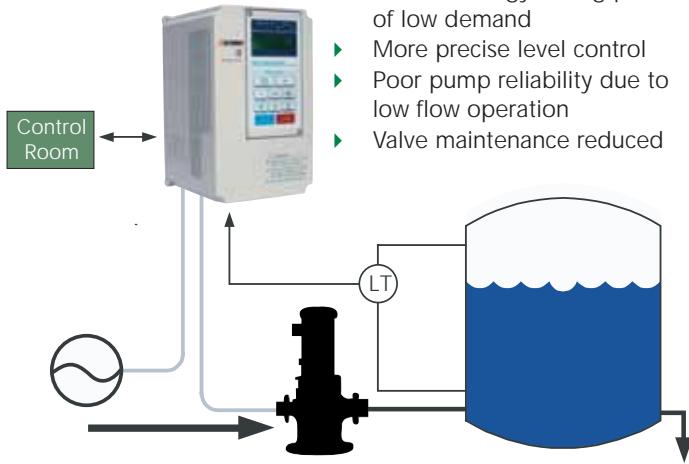
### ECONOMICAL

- ▶ Variable speed cuts energy costs up to 70%

# New System

## Problems solved

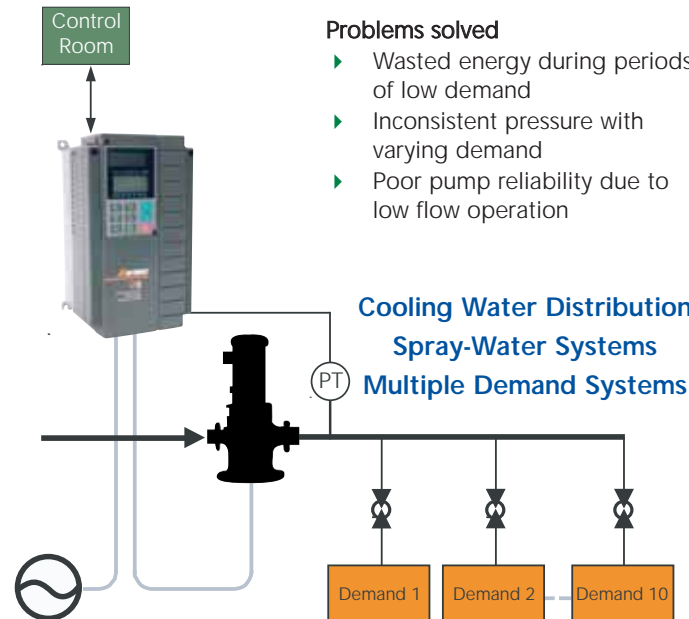
- ▶ Wasted energy during periods of low demand
- ▶ More precise level control
- ▶ Poor pump reliability due to low flow operation
- ▶ Valve maintenance reduced



## Problems solved

- ▶ Wasted energy during periods of low demand
- ▶ Inconsistent pressure with varying demand
- ▶ Poor pump reliability due to low flow operation

## Cooling Water Distribution Spray-Water Systems Multiple Demand Systems



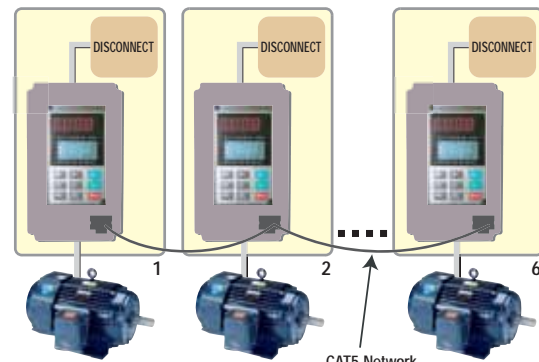
For example, nozzle, heat exchanger etc.

# Typical Pumping Systems

## SIMPLEX



## MULTIPLEX



## APPLICATIONS

- ▶ Booster Pump Systems
- ▶ Sewage Treatment  
Sludge Pumps, Settling Ponds, Metering Pumps
- ▶ Commercial and Residential Irrigation
- ▶ Deep Well Pumps
- ▶ Storage Tank Systems



- ▶ 5580 Enterprise Parkway  
Fort Myers, FL 33905
- ▶ Phone (239) 693-7200
- ▶ Fax (239) 693-2431
- ▶ Website [www.saftronics.com](http://www.saftronics.com)



# DRIVES

for the



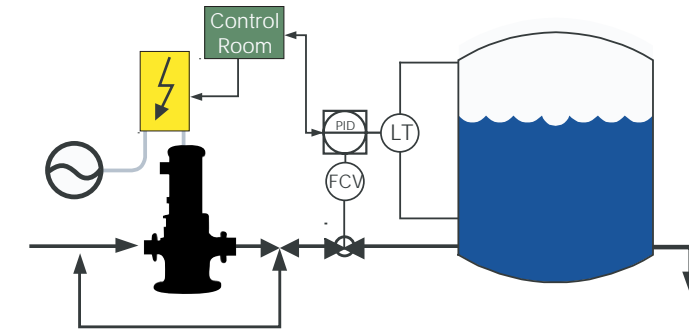
# PUMPING



# INDUSTRY

# Original System

## LEVEL CONTROL SYSTEM



## PRESSURE CONTROL SYSTEM

