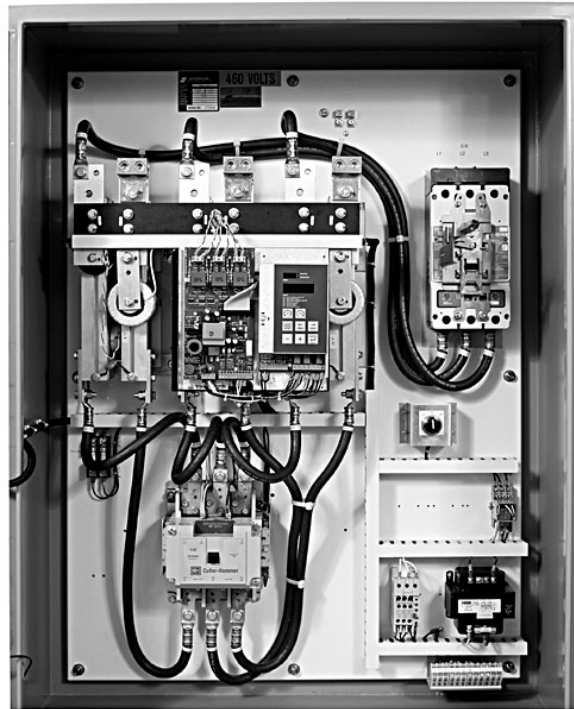


# AS6 SuperPak

## Reduced Voltage Motor Starter

- **NEMA 12 (TENV) enclosure**
- **Circuit breaker with door operator**
- **Full horsepower rated bypass contactor**
- **Emergency start switch (located on the panel to select soft start or across-the-line starting method)**
- **120VAC control power supply**
- **Class 20 thermal overload for the emergency bypass starting**
- **Highest PIV rated SCR's in the industry with MOV surge protection**
- **Start/Stop push-buttons on the enclosure door**
- **Run pilot light on the door**
- **Terminal strip mounted on panel for remote connections**



These standard features represent the complete menu of control requirements in practically every crusher application.

***Nothing needs to be added!***

The AS6 SuperPak package includes the proven Safronics' power section with the latest in digital technology to provide ease of set-up and reliability needed in this demanding application.



# AS6 SuperPak

## Features and Benefits

FEATURES	EXPLANATION	BENEFIT
Package designed for HEAVY DUTY applications	Years of experience with many applications led to the development of this definite purpose product.	Experience and suitability for all demanding application.
Universal Source Matching	Saftronics starters operate on any voltage source from 200V to 600V.	Flexibility. Ability to accept voltage swings common in crusher environments. Ability to be operated from an engine generator power source with unstable voltages and frequencies.
1600 Volt PIV (Peak Inverse Voltage) rated SCR's	Most competitors use SCR's rated 2.5 times line voltage (2.5 x 480V = 1200V PIV). Higher PIV ratings allows an SCR to block higher voltage spikes without breaking over or being damaged.	Minimal SCR damage caused by voltage spikes. More rugged starter.
Overload capacity of 500% FLA for 30 seconds	Starter can withstand two consecutive 30 second starts of five times full load current each in rated ambient temperature.	Rugged
Continuous duty rating of rated current	Starter has a service factor of 1.15.	Heavy Duty
0-10 or 4-20 mA process output	For controlling variable feeders.	More consistent output from crushers and mills.
True torque control	The AS6 combines voltage and current feedback with motor mapping, to accomplish true torque control, competitors may use "open loop" control or current feedback only.	More precise and accurate control of starting characteristics for smoother, longer (if desired) more repeatable starts.
Seven programmable starting modes, including torque control. Default starting mode is "voltage ramp".	Ramps softly from an adjustable start level over a programmable period of time.	Allows greater flexibility of starting conditions for varying loads without the harmful oscillations normally experienced with other soft starts.
Microprocessor based with keypad operator interface.	Starter has a digital keypad for programming, monitoring, and diagnostics.	Simplicity of set-up and monitoring.