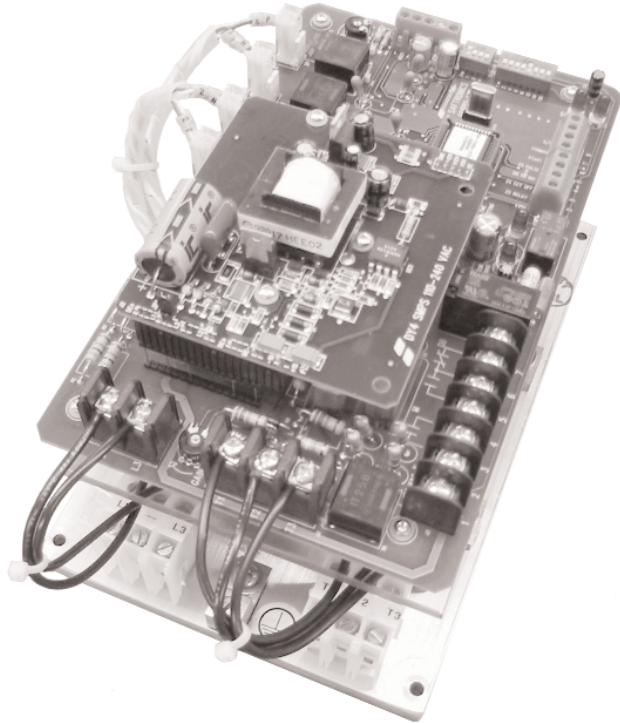


# DY4 Plus

Solid State AC Induction Motor Brakes



THINK  
SAFETY!

## PUT THE BRAKES ON MOTOR COASTING OF

Saws, Chippers, Slicing Machinery, Machinery with Blades  
Grinders, Mixers, Turning Machines, Milling Machines  
Conveyors, Feeders, Shakers, Punch Presses

# DY4 Plus

## TO STOP AC MOTORS SAFELY AND QUICKLY

*NOTE: (1) Not intended for replacement of other machine safety devices. (2) Mechanical brake still required for applications that need holding. (3) DY4 becomes deactivated with loss of power.*

# Solid State AC Induction Motor Brakes

## DRIVES FOR EVERY INDUSTRY

DY4 Plus brakes can be applied to most full voltage electromechanical starters and solid state softstarts, and can be ordered as an installed option on any SAFTRONICS Softstart. Electronic indication should never be used as the only indication that it is safe to proceed. Zero speed should be mechanically or visually verified and the machine locked out before proceeding with any operation in which movement of the machine would pose a risk.

### ADJUSTMENTS

- Braking Current: 33-200% Brake Rating
- Backup Timer: 1-255 seconds via DIP switch
- Zero speed hold time: 0-7.5 seconds (delays release of brake after zero speed is sensed) via DIP switch

### PROTECTION FEATURES

- Large MOV surge suppressors protect each SCR
- R-C Snubber networks prevent false triggering

### DIMENSIONS

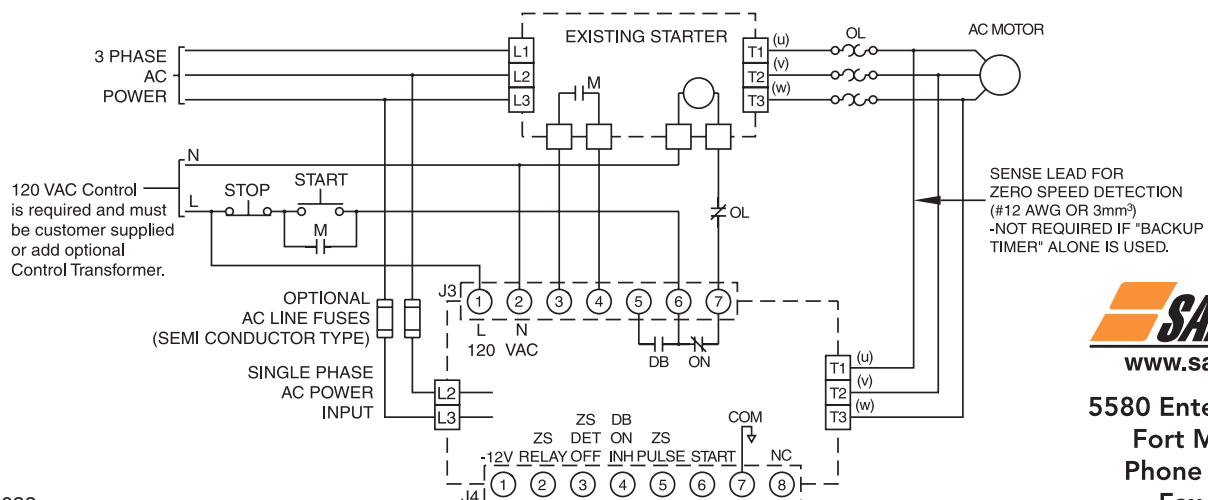
SIZE	DIMENSIONS	CHASSIS	NEMA 12
15 & 40	H x W x D In.	9.5 x 6.25 x 5.25	16 x 14 x 12
	H x W x D mm	241 x 159 x 133	406 x 356 x 254
	Lbs. kg	7 Lbs. 2.3 kg	32 Lbs. 14.5 kg
75	H x W x D In.	10 x 7.5 x 6	16 x 14 x 10
	H x W x D mm	254 x 190 x 152	406 x 356 x 254
	Lbs. kg	8 Lbs. 3.6 kg	33 Lbs. 15.0 kg
125 & 180	H x W x D In.	13 x 7.5 x 7	24 x 20 x 12
	H x W x D mm	330 x 190 x 178	609 x 508 x 305
	Lbs. kg	17 Lbs. 7.7 kg	72 Lbs. 32.7 kg
480	H x W x D In.	15.25 x 14 x 10	30 x 24 x 16
	H x W x D mm	387 x 356 x 254	762 x 609 x 406
	Lbs. kg	35 Lbs. 15.9 kg	115 Lbs. 52.2 kg
720	H x W x D In.	20 x 17 x 12.5	36 x 30 x 16
	H x W x D mm	508 x 432 x 317	914 x 762 x 406
	Lbs. kg	54 Lbs. 24.5 kg	175 Lbs. 80 kg

### SPECIFICATIONS

Power ranges	3-700 HP (2.2 - 500 kW)
Line Voltage	200-600 VAC
Line Frequency	45-65 Hz
Ambient Temperature	10-40°C (operating)
Control Voltage	120 VAC 45-65 Hz (50VA)
Overload Capacity	200% for 60 seconds
"Brake ON" Relay	Form C contact rated 5A 220 VAC
Zero Speed Output	Open Collector 24 VDC 50 mA
Zero Speed Pulse	Open Collector 24 VDC 50 mA

### HORSEPOWER RATINGS (GENERAL PURPOSE)

MODEL	HP RATING				
	208 V	230 V	380 / 415 V	460 V	575 V
DY4 - 15 PLUS	3	5	7.5	10	15
DY4 - 40 PLUS	10	15	25	30	40
DY4 - 75 PLUS	20	25	50	50	75
DY4 - 125 PLUS	40	50	75	100	125
DY4 - 180 PLUS	60	75	125	150	200
DY4 - 480 PLUS	150	200	350	400	500
DY4 - 720 PLUS	250	300	500	600	700



**SAFTRONICS**  
www.saftronics.com

5580 Enterprise Parkway  
Fort Myers, FL 33905  
Phone (239) 693-7200  
Fax (239) 693-2431  
www.saftronics.com